



# DRAWERS PACK

## ASSEMBLY & INSTALLATION GUIDE

This information sheet provides details of how to assemble and install sliding drawers for use with storage units.

**Please take time to read it through fully prior to starting on the assembly of your sliding drawers.**

This pack contains:

- **2 x drawer bases**  
(l)385mm x (w)330mm x (d)8mm
- **4 x drawer sides**  
(l)400 x (h)125mm x (d)16mm
- **2 x drawer backs**  
(w)320 x (h)110mm x (d)16mm
- **2 x drawer fronts**  
(w)395 x (h)173mm x (d)18mm
- **4 x drawer runner assemblies**
- **2 x drawer handles**
- **Fixings** - 16 x wooden dowels; 4 x 45mm screws;  
4 x 12mm countersunk screws; 4 x minifix housings;  
4 x minifix bolts; 4 x adhesive hole covers

### Tools required (not supplied)

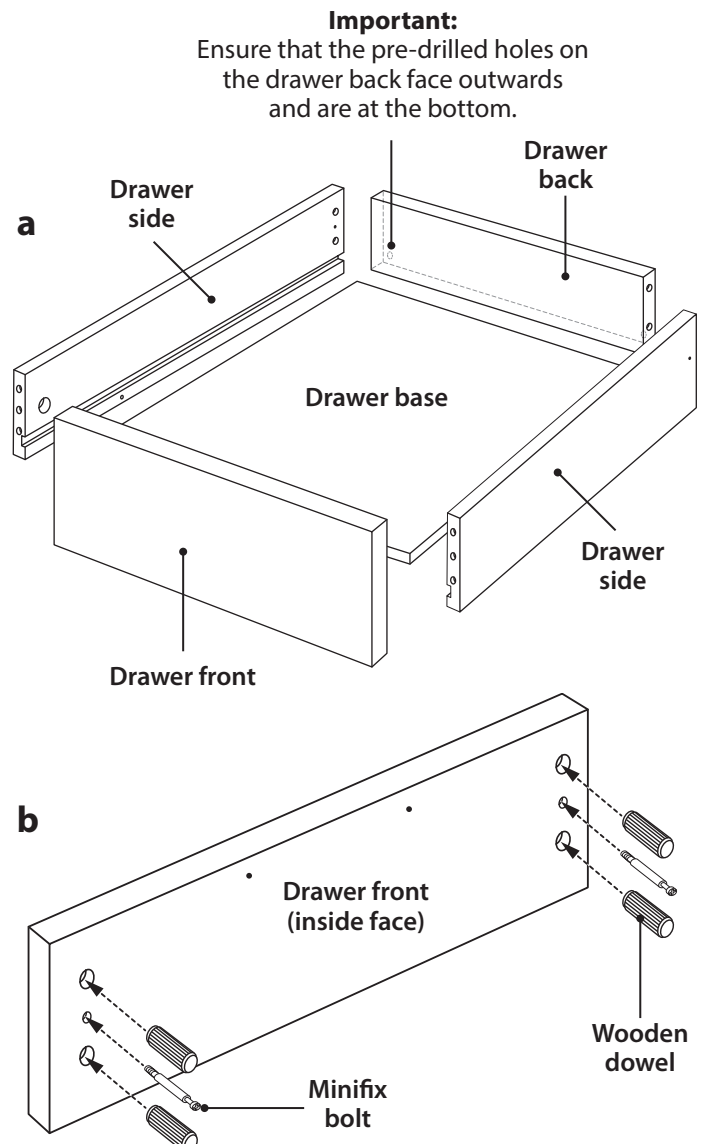
- Wooden mallet
- Crosshead screwdriver

## 1. Assembling the drawer box

On a flat surface, lay out the pieces to assemble one drawer as shown in illustration **a**. Take a careful note of the positions of the pre-drilled holes and rebates in the various pieces. Ensure that the drawer front is positioned so that the two small pilot holes are on the top edge of the inside face.

Insert four of the wooden dowels into the pre-drilled holes at each end of the drawer back i.e. two in each end. With a mallet, gently tap these so that they are fully located within the holes. Again, with the drawer front, insert another four dowels into the larger pre-drilled holes on the inside face of the drawer front and tap gently with a mallet to ensure they are fully located. In the remaining two pre-drilled pilot holes on the inside face of the drawer front, insert two of the minifix bolts (see illustration **b**) and screw these in firmly using a crosshead screwdriver.

Match up the pre-drilled holes in the back edge of the left hand drawer side with the wooden dowels protruding from the left hand side of the drawer back, ensuring that the two holes on the drawer back are facing outwards and are at the bottom – see the note on illustration **a**. Using the mallet, tap the two sections together gently.



Repeat this operation with the right hand drawer side so that the two drawer sides are now connected to the drawer back. Now, slide the drawer base into the two rebated channels in each of the drawer sides until it butts up against the drawer back – see illustration **c**.

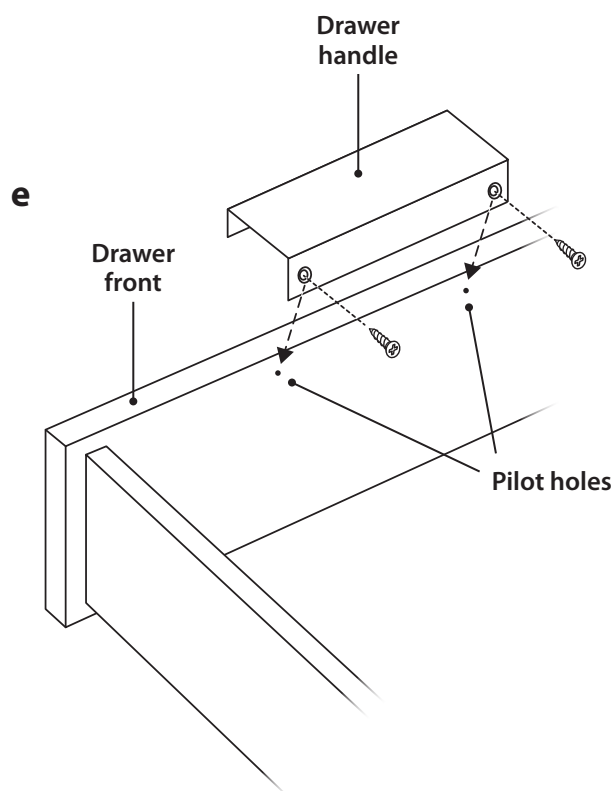
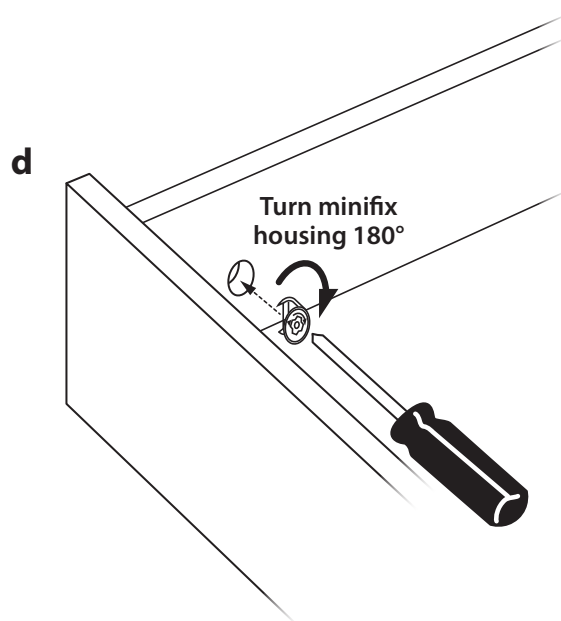
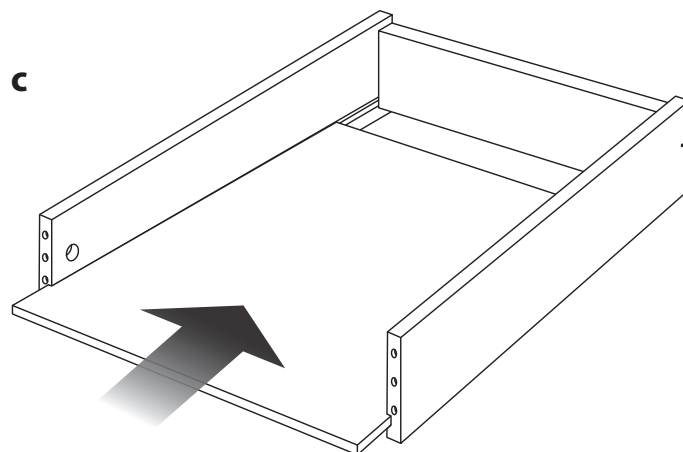
Offer up the inside face of the drawer front so that the dowels locate into the top and bottom holes on each of the drawer sides and the minifix bolts locate into the central holes inbetween. Push the drawer front at each end so that it butts up firmly against the drawer sides.

Into each of the two large pre-drilled holes at the front edge of each drawer side push a minifix housing, **ensuring that the cross head side is visible**. Using a crosshead screwdriver, turn each minifix housing clockwise a half turn (180°) so that the drawer front is pulled tight against the drawer sides – see illustration **d**. For a neat finish, use two of the adhesive hole covers supplied to cover the minifix housings after tightening.

Finally, use two of the 45mm screws to further secure each of the drawer sides to the drawer back – one screw at each side, through the pre-drilled pilot holes provided.

Fix the drawer handle by matching up the countersunk holes in the handle with the two small pre-dilled pilot holes on the top inside edge of the drawer front and using a cross head screwdriver secure with two of the 12mm countersunk screws provided – see illustration **e**.

Repeat the steps above to assemble the second drawer.



## 2. Fitting the drawer runners

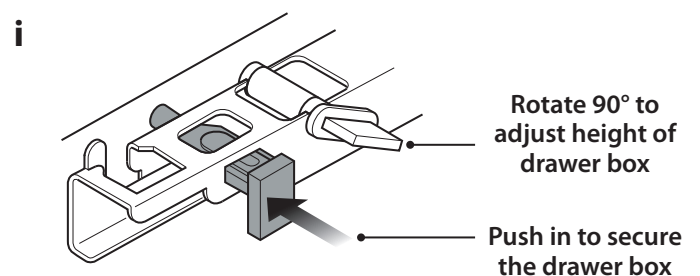
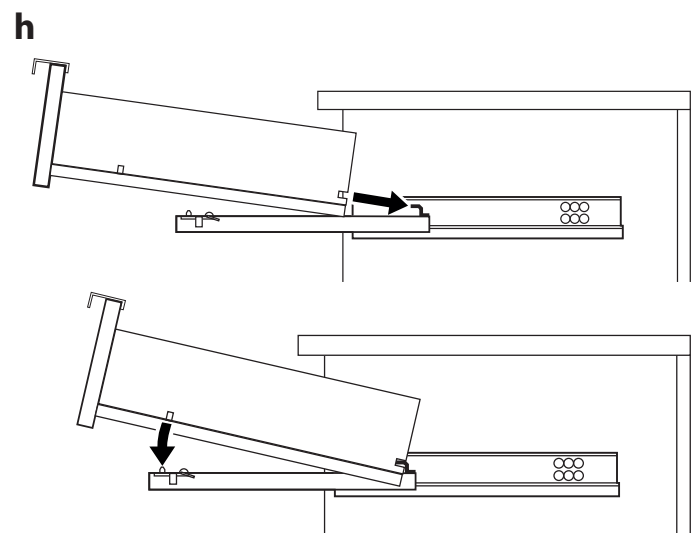
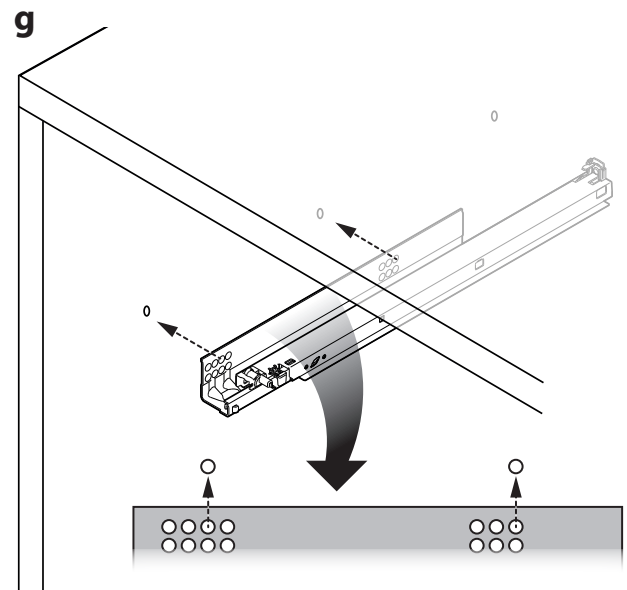
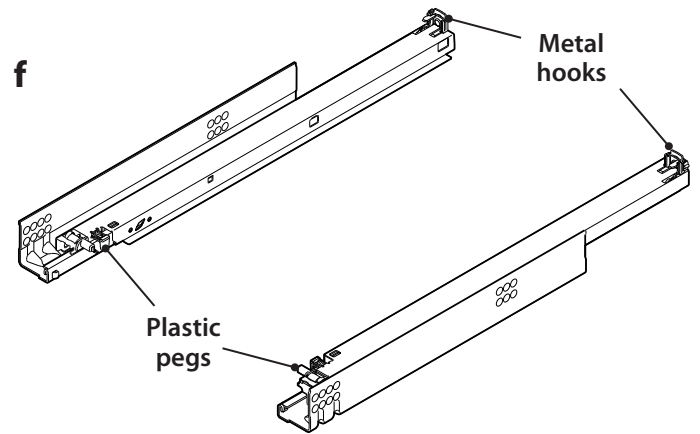
There are two sets of drawer runner mechanisms in this pack. Select one of the sets and separate out the right and left drawer runners. When placed in the positions as shown in illustration **f** notice that the front end of the drawer runner is that which has two plastic pegs protruding from the runner itself and that there is a small metal hook at the rear end, which locates into the small holes in the back of each of the drawers.

Take the left hand drawer runner and match the holes on the side of the runner to the positions of the first two pre-drilled holes on the inside left of your offset shelf stack cabinet – see illustration **g**.

Secure the drawer runner to the side of the cabinet using two of the crosshead screws provided with the offset shelf stack pack.

Repeat this process to position the right hand drawer runner to the inside right of the offset shelf stack.

Repeat the above two operations to position and secure the second pair of drawer runners.



## 3. Fitting the drawers

With all the drawer runners fixed in place, fully extend the sliding sections of the bottom pair of runners so that they protrude from the front of the offset shelf stack cabinet – see illustration **h**.

Slide the drawer box onto the runners until the metal hooks at the rear of each runner locate in the holes on the back of the drawer box. Then, carefully lower the drawer box downwards so that the metal peg on the runner engages with the hole in the underside of the drawer box.

To fix the drawer box to the runners you will need to push in the grey plastic peg (securing mechanism) – see illustration **i**. This action will snap off some small retaining tabs.

If necessary, you can adjust the height that the drawer sits at on its runners by rotating the height adjuster 90 degrees.

---

**Disclaimer:** It is the responsibility of the customer to ascertain that the area for installation is structurally sound and that any drilling necessary will not compromise electrical wiring, water pipes or gas services. The information provided herein is intended as a guide to good practice. The manufacturer cannot be held responsible or liable for any damage, wear or malfunction caused to components due to inadequate or improper installation.

---