



PULL-OUT DRAWERS

ASSEMBLY & INSTALLATION GUIDE

This information sheet provides details of how to assemble and install pull-out drawers for use with storage units and/or bedside units. **Please take time to read it through fully prior to starting on the assembly of your pull-out drawers.**

This pack contains:

- **2 x drawer bases**
(l)390 x (w)341 x (d)16mm
- **2 x drawer backs**
(l)318 x (w)101 x (d)16mm
- **2 x drawer fronts**
(l)394 x (w)173 x (d)18mm
- **2 x drawers hardware packs**
(includes runners, metal drawer sides and drawer front fixings)
- **2 x drawer handles**
- **Fixings** - 36 x 16mm screws

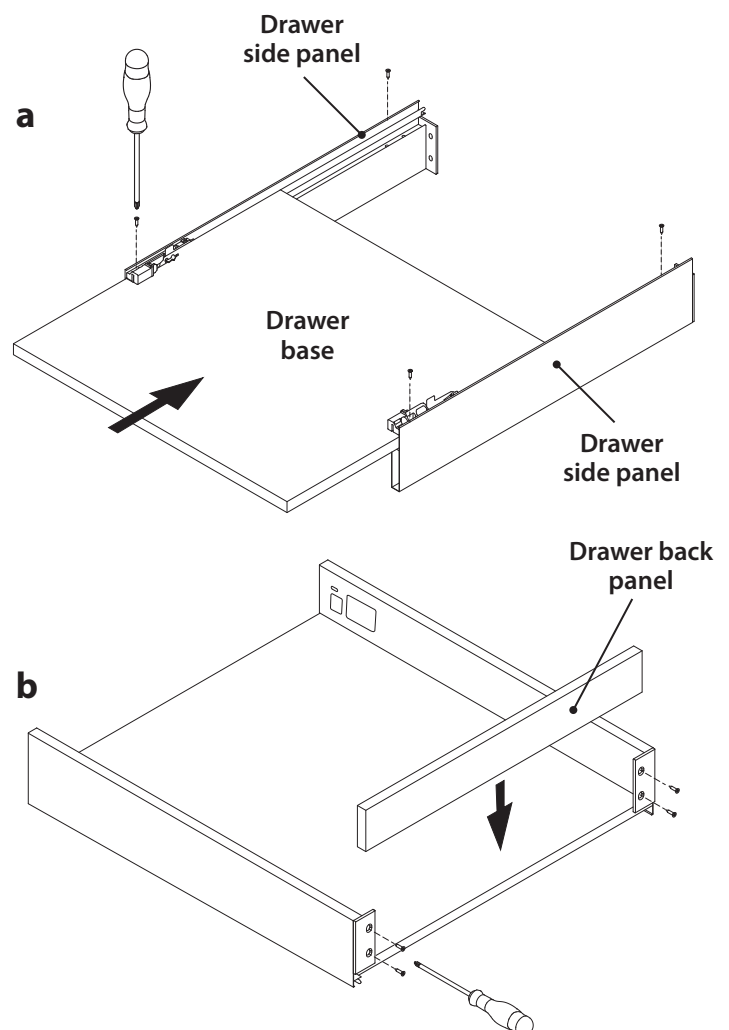
Tools required (not supplied)

- Crosshead screwdriver

1. Assembling the drawer box

Identify the two metal drawer side panels and with them positioned as shown in illustration **a** slide the drawer base into the channels on each of the drawer sides, as shown. Ensure that you slide the base in so that its shorter edge is across the width of the drawer (ie. the drawer is deeper than it is wide). Secure the base to the sides using four of the screws provided.

Turn the drawer box over and insert the rear panel between the two drawer sides, as shown in illustration **b**. Secure in place using four of the screws provided.



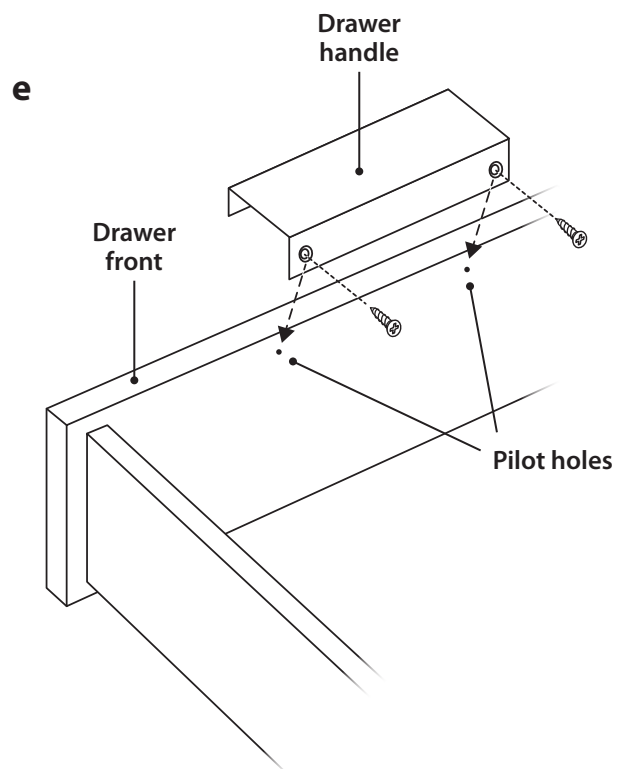
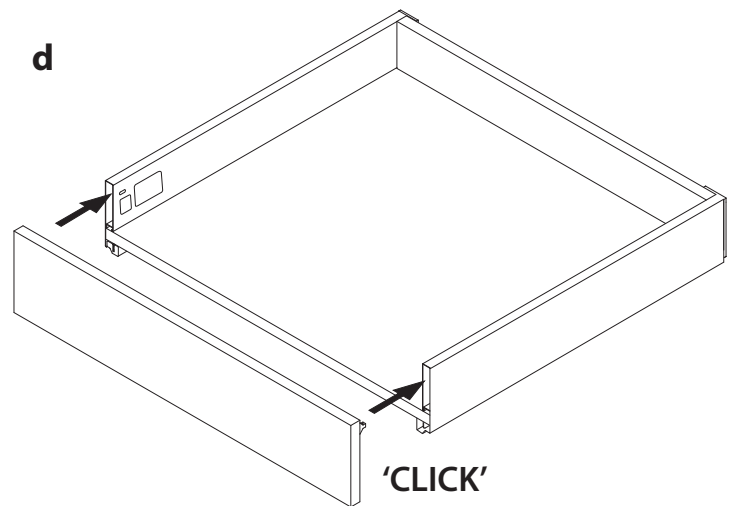
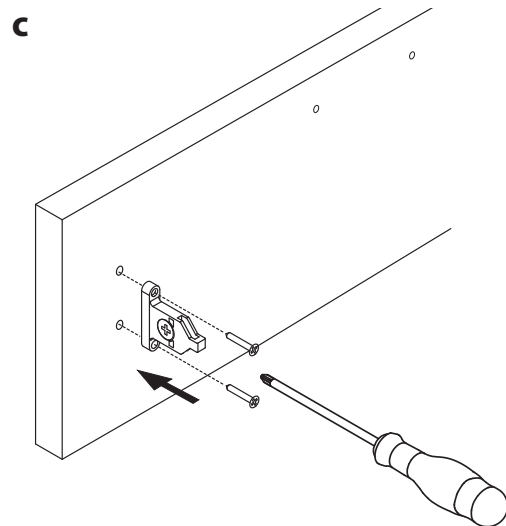
Locate two of the metal drawer front fittings provided and using two screws for each, secure one to either side of the inner face of the drawer front into the pre-drilled holes – see illustration **c**.

Checking that the two small pre-drilled holes in the centre of the inside face of the drawer front (for attachment of the drawer handle) are at the top edge, push the two metal fittings into the two matching spaces on the ends of the drawer sides until you hear them click into place – see illustration **d**.

Attaching the drawer handle

Fix the drawer handle by matching up the countersunk holes in the handle with the two small pre-drilled pilot holes on the top inside edge of the drawer front and using a cross head screwdriver secure with two of the 16mm countersunk screws provided – see illustration **e**.

Repeat all the steps above to assemble the second drawer.



2. Fitting the drawer runners

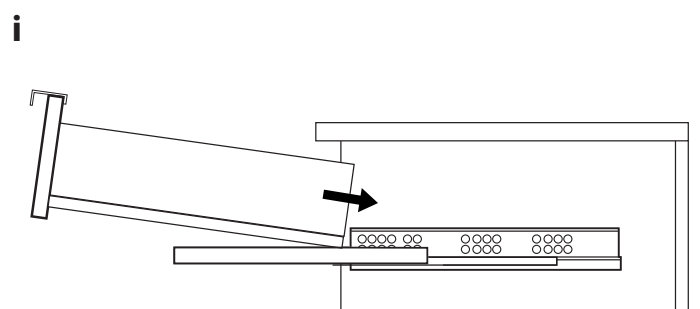
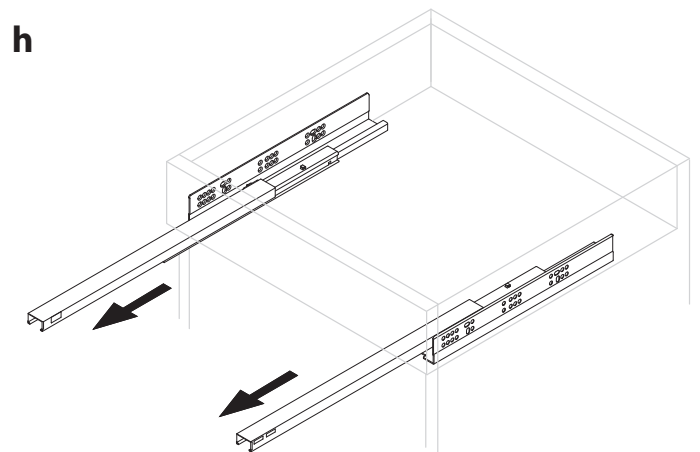
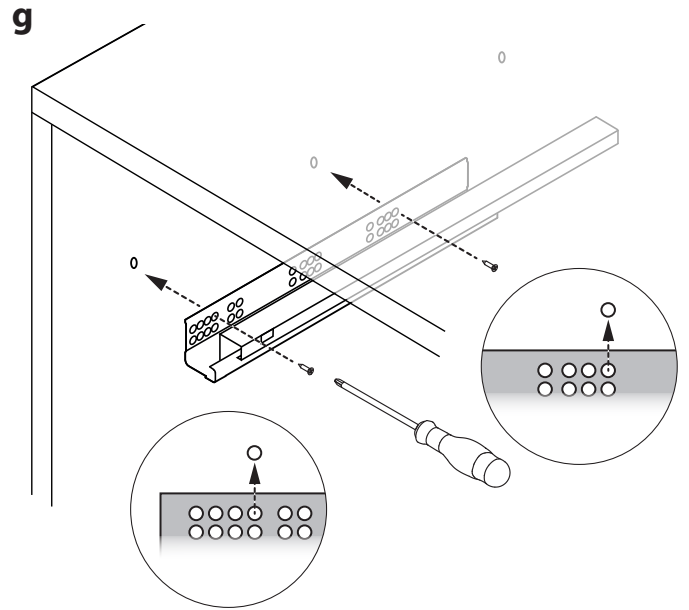
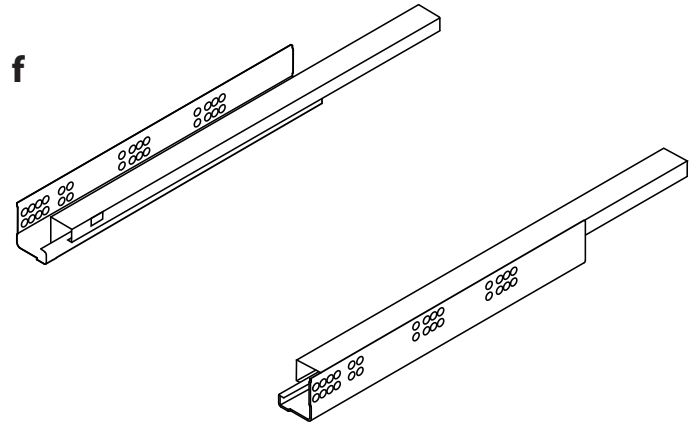
There are two sets of drawer runner mechanisms in this pack. Select one of the sets and separate out the right and left drawer runners – see illustration **f**.

Take the left hand drawer runner and match the holes on the side of the runner to the positions of the first two pre-drilled holes on the inside left of your offset shelf stack cabinet or bedside unit – see illustration **g**.

Secure the drawer runner to the side of the cabinet using two of the crosshead screws provided with the offset shelf stack pack or with the bedside unit pack.

Repeat this process to position the right hand drawer runner to the inside right of the cabinet.

Repeat the above two operations to position and secure the remaining pairs of drawer runners.



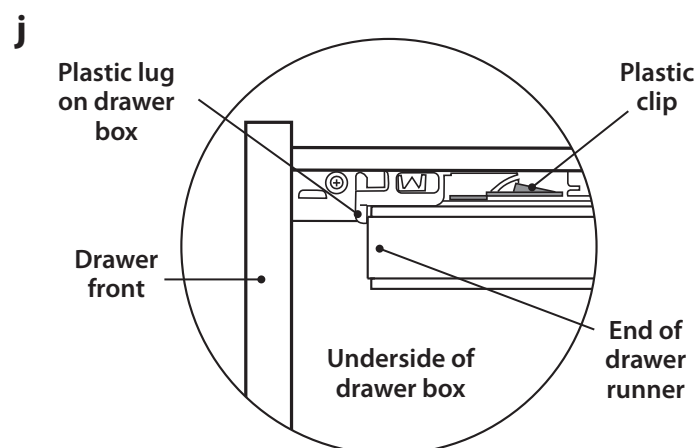
3. Fitting the drawers

With all the drawer runners fixed in place, fully extend the sliding sections of one pair of runners so that they protrude from the front of the offset shelf stack cabinet or bedside unit – see illustration **h**.

With the drawer box held at an angle as shown (see illustration **i**) slide the drawer box side panels on to the runners and gently lay the drawer box flat. Push the drawer box along the runners until you hear a couple of clicks. This indicates that the plastic clips on either side of the drawer box have clicked into position against the drawer runners. To check the drawer is in the right position on the runners, look underneath and you should see that the end of the drawer runner has

engaged with the plastic lug on the side of the drawer box – see illustration **j**.

Slide the drawer box into the fully closed position and then open it again to check that the runners have properly engaged and are running freely.



4. Drawer front adjustment

Once the drawers are installed you may need to adjust the positions of the drawer fronts within the shelf stack or bedside unit slightly. To do this, unclip the plastic cover on the inner side of the drawer box, and using a crosshead screwdriver to make the necessary adjustments, follow the instructions shown in the diagrams opposite.

To move the drawer front to the left or right:

Turn the adjustment screw shown in illustration **k** clockwise or anti-clockwise.

To move the drawer front up or down:

Turn the adjustment screw shown in illustration **l** clockwise or anti-clockwise. (To ensure the drawer front remains horizontal, a similar adjustment may need to be made by turning the corresponding screw on the other side of the drawer box.)

To lock the drawer front in position:

Turn the screw shown in illustration **m** clockwise to lock the drawer front in position. To unlock the drawer front, turn the same screw anti-clockwise.

When you have finished making any necessary adjustments, replace the plastic cover.

